

## In this issue

Hello Grangers	2
President's Message	3
Bill's Opinions and Comments	3
Around the Grange	5
News from the National Grange	6
Program Materials Available to Local Granges	7
Use of Proprietary Marks	8
Around Washington, D.C. and Beyond	9
Not Knowing the Dates Could Cost You	12
Getting to Know Medicare	12
A Pioneer Hits the Road Again	14
The National Grange and Medicare Part D	14
55 Years of Friendship and Still Going	15
Looking Back in Time - 1873	16
Ag Talk	17
Kid's Page	18
At Home with Bill	19



Members of the Pleasant Valley Grange Support Troops with Packages and Prayers. See story on page 5.

## National Grange Hires New Junior Grange Director

The National Grange recently announced the appointment of Anne Kurburski as Junior Grange Director. "We are excited about the direction Anne will take the Junior Grange," National Grange President William Steel said. "She brings an excitement and enthusiasm for the Junior Grange and is looking forward to sharing that with every Grange member."



**Anne Kurburski**  
Junior Grange Director

Kurburski is a member of Harbor Springs Grange #730 in Harbor Springs, Michigan, where

she lives with her husband, Foster, and their six children – John, Elizabeth, Emily, Katie, Peter, and Luke.

She has been a life skills teacher for the past 15 years for the Petoskey Public School District. She teaches grades 6-8 at Petoskey Middle School. Her educational background includes a bachelors and a master's degree from Michigan State University.

Kurburski served as the Michigan State Grange Youth and Young Adult Director for six years and the Junior Director for two years. She has also served on the Michigan State Grange Junior Committee and the National Grange Junior Committee. Her Grange accomplishments include: Michigan State Grange Young Couple of 1997, Rural Leadership Award from Potomac Grange #1, Outstanding Youth and Young Adult Award, and Youth and Young Adult Service Award.

"I look forward to workings as the National Junior Grange Director, and I will work diligently to provide a quality program for every Junior Grange member across the nation," Kurburski said.



# Hello Grangers!

## Meet Lynn Dawson, Controller

Born in South Bend, Indiana of parents who were enthusiastic Notre Dame fans, I spent my childhood, until the age of 23, in Cleveland, Ohio.

I graduated with a degree in Elementary Education from Mount Union College in Alliance, Ohio. I was, on graduation day, very reluctant to leave and begin my life in the “real world.” Since that was my only option, I headed back to Cleveland once again.

Four years of teaching first grade followed – two years in Cleveland and then two years in Maryland. I quickly concluded that since I liked art, music, recess, and lunch period, not to mention vacation, as much as my students that maybe, just maybe, teaching was not for me. I was, however, introduced to my husband by one of my Maryland first graders. That made my four years of teaching worth every minute.

Pulte Homes Corporation, a residential construction firm, just moving into the Mary-

land market took a chance on me and hired me as an accounting clerk. I knew nothing about offices, could barely type, and had never seen an adding machine, but they were desperate for help in the accounting department and wanted me to start the next day. I, however, had planned a trip to the beach so I told them I would not be able to start for at least another week. Lucky for me, they did not throw me out of the office.

After twelve wonderful years at Pulte, the last six as assistant controller, I left to become controller at The National Association of Furniture Manufacturers, where I enjoyed six years, until we were taken over by the Southern Furniture Manufacturers and our staff was disbanded. Then, it was onto another position in commercial construction.

Even though I was a “city girl” from Cleveland, Ohio, I was always aware of the Grange. We had so many of them in rural Ohio when I was growing up. Whenever Grange was mentioned it was in the most positive manner and with much respect.

When Former Grange Master Ed Andersen and his wife, Darlene, interviewed me for the job, I felt like I had known them for years. I happily accepted their offer. That was in September 1987, and I have been here ever since.

I have met so many wonderful folks, most of whom are still friends today, through my Grange experiences. And, I truly believe that our focus as Grange members on helping others and initiating wide spread community service should keep us going for another 137 years.

**Lynn Dawson**  
Controller



## Meet Chil-sook Hwang, Legislative Research Analyst

The job title, legislative research analyst, may give you an impression that what I’m doing is super complicated, but the job description is quite simple – helping the Grange have their voice heard. Placing a communications bridge between Grange members and policy makers is my number one priority and what grassroots advocacy is all about.

Professionalism in Washington advocacy depends increasingly upon local participation and as the National Grange’s Legislative Department understands it, its lobbying principle has been to encourage members to make their own informed decisions and take action. It has been my pleasure and honor to serve the Grange members in those efforts – for three and half years.

If you have ever received an e-mail called “Action Alert” or “View from the Hill” you already know me – I’m the primary author of the two. I also craft other legislative advocacy products such as letters, press releases, and editorials. Some of my other duties are building networks with other coalition groups

and organizing legislative events, such as the annual Fly-In.

As many Grange members know, I’m a native of Seoul, South Korea and have spent more than four-fifths of my life there. I majored in History in Ewha Women University in Seoul, and after graduating, I started my career as a campaign manager to promote congressional candidates. My job covered campaign strategies, speech writing, and polling. While studying and working, I enjoyed reading philosophy and joined different book groups to explore a way of living as a free individual and a responsible social being in harmony, which is still the theme of my life.

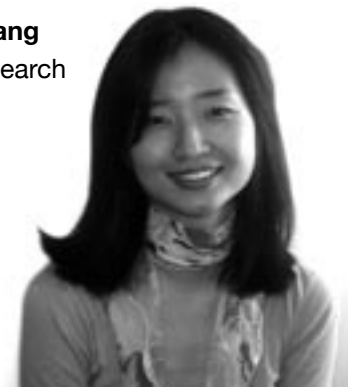
Upon planning the major event of my years, I moved to the United States. I studied Political Management at George Washington University (GW) and received a master’s degree in two years.

During the summer at GW, I interned at the Medical Society of D.C. and kicked off my researching job in government affairs. The short experience on K Street gave me an initial picture of what nonprofit organization-advocacy efforts should look like. I also took

many short and long trips across the nation, from California to New York, during the two years, which allowed me to have a broader perspective of different environments and cultures in the United States.

When I first came to the Grange, I was fascinated by its traditional membership structure from local to national, as a model of grassroots organization. A bottom-up policy development process was what I thought of as an ideal shape of democratic politics. Working for the nation’s oldest farm organization, I am continuously learning about how a grassroots voice can effectively be delivered and influence policy makers. I am proud to be a Granger.

**Chil-sook Hwang**  
Legislative Research  
Analyst



# President's Message

Let the hustle and the bustle begin. The holiday season is upon us. Soon we all will be hurrying to the supermarket to find the plumpest turkey, the greenest green beans, and the sweetest cranberries. We will be gathering ingredients to bake our favorite cookies, pies, and cakes. We will be hunting down the biggest Christmas trees and making homemade ornaments. We will be standing in long lines at our favorite stores, wrapping gifts, and stuffing stockings.

Indeed, the holiday season puts the biggest smiles on faces and warms even the coldest hearts.

But, let us not forget those who have experienced total devastation this year. Many heart-wrenching events have affected the nation in 2005 – the train bombings in Europe, the horrifying Tsunami, the War in Iraq, and the damaging Hurricanes – Katrina and Rita.

I urge you all to stop and acknowledge in your own way those people who were the victims of these unforgettable events that will forever be etched in our hearts and minds. I am proud of those Granges that came together to support the troops and victims of



William Steel

Hurricanes Katrina and Rita. The National Grange office was flooded with stories and pictures of Granges preparing care packages to send to troops or hosting dinners to raise money for individuals and families living in Louisiana, Mississippi, and Texas.

Community service is what keeps the

heart of the Grange pumping. So as we prepare for this holiday season, please continue to reach out to those less fortunate in your communities.

The entire staff of the National Grange wishes you and yours a happy holiday season

## Bill's Opinions and Comments

### The Video Choice Act of 2005

Congress will soon be taking up the Video Choice Act of 2005, a bill that will determine if Americans can count on competition to force cable TV monopolies to deliver better services at competitive rates. For rural America, such competition is about much more than just new programming options. It is about a choice between isolation and participation in global culture, education, medicine, public safety, and commerce.

The cable television industry was actually conceived and born in rural America.

Beginning as a service for people living too far from a city to receive a broadcast signal, cable television became a vital link for Americans living on farms, ranches, and small towns to the wider world of popular culture and world news. Eventually, like many other children of rural areas, most cable television providers left their humble rural beginnings to make their way in the larger cities, where they could bring their new service to more customers. But like some former rural residents who have moved to the cities, the cable industry has forgotten many of the "rural" virtues that helped foster cable as a suc-

cessful industry, i.e. value-based pricing and strict cost controls, attention to customer service, and a strong commitment to invest in and serve those who could not otherwise affordably receive comparable information services from other sources. So after decades away from its rural roots, cable is no longer the great deal it used to be.

To understand why, compare cable to other major consumer information services. In recent years, the cost of nearly all other communications services such as computers, telephone calls, Internet connections, cell phones, and wireless services has plunged, while the number of options and features has exploded. What course has cable followed? The Consumer Federation of America reports that cable companies have raised rates by about 60 percent since 1996. Does anyone claim that cable has become 60 percent richer in content, 60 percent

#### **Publisher's Information:**

The New Grange (ISSN: 1046-000) is published by: The National Grange, 1616 H Street, NW, Washington, D.C. 20006-4999. Telephone: 1-888-4-GRANGE, Fax: 202-347-1091, E-mail: info@nationalgrange.org

**Publisher: Richard Weiss Editor: Shaletta Espie**

Statements of fact and opinion are the responsibility of the authors and do not imply an opinion on the part of the officers, staff, or members of the National Grange. Letters to the editor and manuscripts are welcome and encouraged. Mail your comments to: National Grange, Attn: Editor – The New Grange, 1616 H Street, NW, Washington, D.C. 20006-4999.

© Copyright 2005 by The National Grange | Materials may not be reproduced without permission.

## NOW AVAILABLE

# National Grange Property Insurance Program

Hays Affinity Solutions, the National Grange Insurance Program Administrator, has developed an easy and affordable property insurance program available exclusively to National Grange Halls.

**Plan highlights:**

- INSURED:** The National Grange, with certificates for individual granges evidencing coverage.
- COVERAGE:** All Real and/or Business Personal Property, including property in care custody and control, property of others, renovations, betterments and improvements, property in the course of construction, building ordinance and/or extra expenses.
- LIMIT:** Individual Grange Hall limits will be scheduled, based upon the value of their specific combined building and contents value.
- DEDUCTIBLE:** Based upon the insured value of your combined Building and Contents Value
 

Property and Contents Value	Deductible per Occurrence
\$0 - \$100,000	\$1,000
\$100,001 - \$500,000	\$2,000
\$500,000+	\$5,000
Catastrophe Zone Deductible	Additional 12% of total value, if Coverage is purchased
- ANNUAL PREMIUM:** .3% of insured value of building and contents combined  
.5% additional for Catastrophe Coverage in applicable zones (Earthquake, Flood, Hurricane, Wind).
- VALUATIONS** Building and Contents **Stated Value**  
*(in the event of a loss, you will not be paid more than the limit of the policy. Therefore, it is important to insure to replacement cost value).*
- INSURANCE CARRIER:** Lloyd's of London, an "A" rated underwriting organization, and one of the oldest international underwriters in the world.

**FOR MORE INFORMATION:**

Contact the The National Grange Insurance Program Administrator  
**Hays Affinity Solutions**  
1250 24th Street, NW, Ste 725  
Washington, DC 20037  
202-263-4043

Or visit <http://www.nationalgrange.org/memberbenefits/Propertyapp.pdf> to download the application, and fax back to 202-263-4001

General Liability Insurance available, too. Call us for more information: 202-263-4043

**Don't miss out on this exclusive insurance plan for National Grange Halls.**

**CALL US TODAY & SAVE!**



Administered by Hays Affinity Solutions

# Around the Grange

## Packages & Prayers

Pleasant Valley Grange Supports The Troops

Their skin is parched from the sun. Their legs peppered with bites from sand fleas. Their nerves tested by ruthless enemies.

But somewhere in the desert of Northern Iraq, troops from the United States 3rd Armored Cavalry are getting their spirits lifted with the arrival of packages from home. Recently, more than 65 packages were sent, along with prayers, by the members of the Pleasant Valley Grange, located in a small rural community in El Dorado County, California.

The efforts are being lead by Connie Gundelach, Carol Doell, and Barbara Silva of the Grange Women's Association. Initially, \$500 was raised for the troop packages from selling T-shirts at the annual Grange-sponsored Pleasant Valley 4th of July Parade. This was supplemented with money raised

from a craft fair and sandwich sales at the nearby Placerville Antique Fair.

The effort has attracted donations of goods and cash from dozens of well-wishers, like former Pleasant Valley Grange Master Dick Jetter, who recently threw down \$100 on the packaging table toward Christmas packages. The Grange plans to send 40 more packages to the troops in time for Christmas.

Packages are stuffed with items such as breakfast bars, candy, dried fruit, Vienna sausages, potato chips, deodorant, lip balm, sun tan lotion, playing cards, flea collars, and beanie babies. The flea collars are worn between the sock and the shoe to keep away the sand fleas which are a big problem in Iraq, explained Jetter.

Beanie Babies are given to Iraqi children by the troops to promote goodwill. "This way the kids become their friends, instead of shooting at the troops," said Granger Nick Nemeth. Nick donated a bag of Beanie Ba-



Commander's Coin presented as a thank you for their packages and prayers

bies he found at a local garage sale.

The Grange women shop at discount stores and Costco to save on items to be packaged. The postage for each package sent to Iraq is \$7.70, in special boxes provided free from the U. S. Post Office.

At every regular meeting of the Pleasant Valley Grange, members pause to pray for the safety of the U.S. troops in Iraq. In April 2004, Lt. Col. Gregory Reilly, Commander of the 1st Squadron of the 3rd Armored Cavalry, presented the Pleasant Valley Grange with a coveted Commander's Coin, in honor of the prayers and support received from the Grange. Miraculously, as a result of such prayers, the squadron suffered fewer casualties than any other unit although the squadron was attacked more than any other unit.

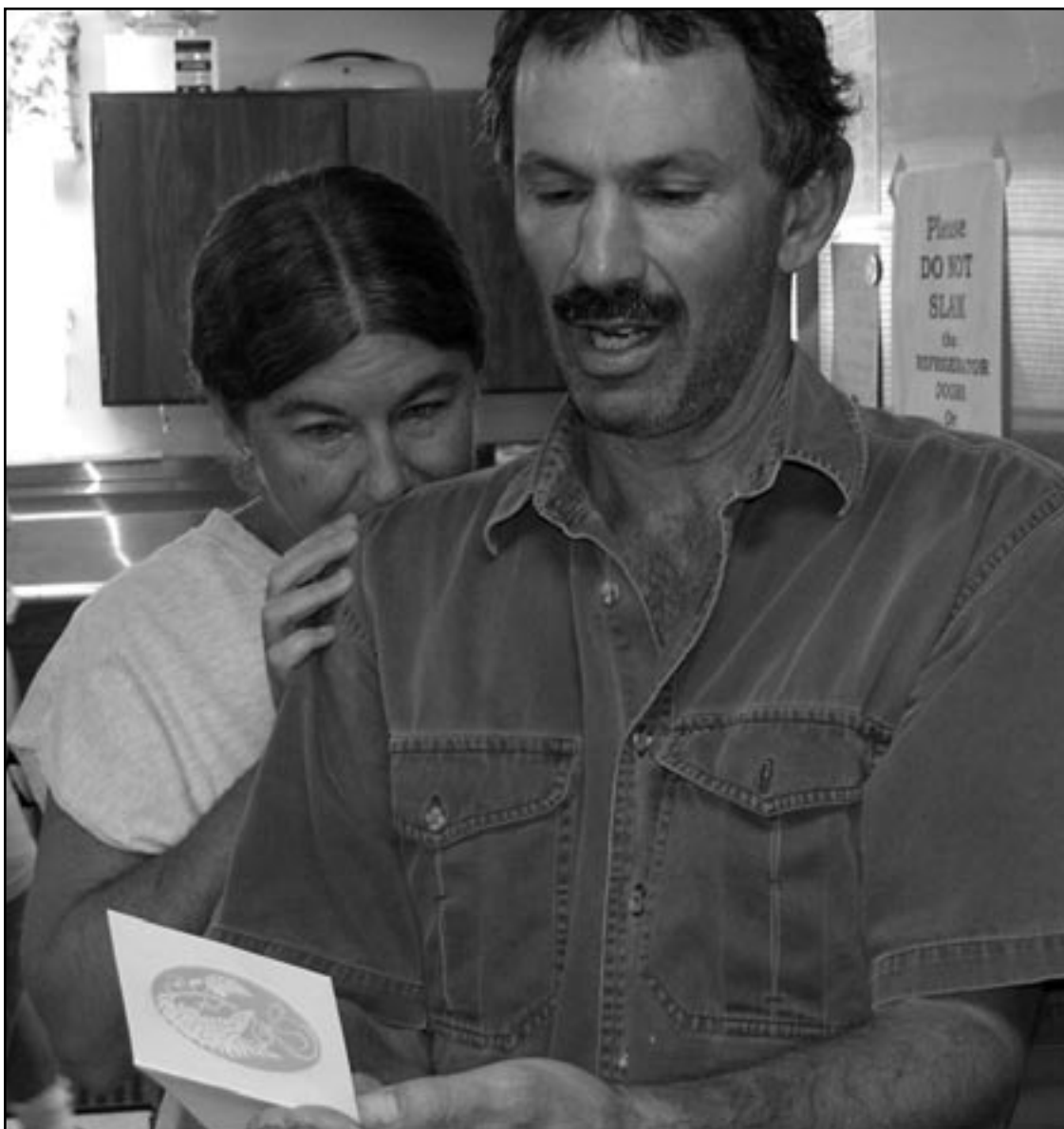
The rare commendation is awarded to persons and organizations that demonstrate uncommon support for the troops. A second Commander's Coin was awarded in September 2005 for the Grange's continuing effort.

In appreciation of the packages and prayers, troops also have sent letters and cards: "It is great to know there are people like you out there that care and support us while we are serving over here," Sergeant Brent Holmes wrote.

Carol Doell recently brought a bouquet of flowers she received to the Grange. Carol read aloud the accompanying card: "This is a thank you for your support during this time. The care box was greatly appreciated. Above all, thank you for your prayers. With love, SGT. Keith Pleva."

The Pleasant Valley Grange pledges to continue the packages until the troops are home. Goods and money may be donated by contacting the Pleasant Valley Grange at (530) 644-1602.

Pleasant Valley Grange member reads a thank you note from the 3rd Armored Cavalry.



# News from the National Grange

## Dustin Seebruch and Jodi Keith Selected as Horizon Leadership Mentors

By **Cindy Greer**, Youth Director

Dustin Seebruch and Jodi Keith, who served as Horizon Leadership Ambassadors in 2004, were selected to serve as mentors to the 2005 class of Horizon Leadership Ambassadors in Columbus, Ohio. The Grange Foundation - Youth Leadership Fund paid for their transportation, lodging, and meal functions.

Dustin is a member of Stanford Grange #808 in New York. He is the son of Seward and Dianne Seebruch. Dustin is returning to Dutchess Community College this year. He has been active in the Grange since 2000 and is a seventh-degree member.

Dustin participated in the New York State Grange camp that was held at Camp Oswegatchie and the Regional Youth Conference in Farmington, Maine. He has been involved in Boy Scouts, achieving the rank of Eagle Scout in October 2003. He also volunteers as a fireman and with the Meals On Wheels program in his hometown.

Being home schooled from the age of 11 to 14, allowed Dustin to start college at the age of 15. Dustin received an award for being the youngest person (18) to ever graduate from Dutchess Community College. He received an associate of science degree in liberal arts and science in 2004. He now plans to earn a certificate in spring 2006 for A/C and refrigeration.

He was recognized as a Grange camp counselor and has been involved in many youth weekends and activities. He assumed a leadership role in his local Grange as a member of the youth committee. During this past year, he helped out at his local Junior Grange. Dustin helped organize and support youth activities, served as a state Grange youth officer, and participated in the drill at state Grange, which he helped design.

Jodi Keith is a member of Lincoln Grange #914 in Pennsylvania. She is the daughter of John and Cindy Keith. They reside on her family's dairy farm in Entriiken, PA. She is in her second year at Conemaugh School of Radiology.

She became involved in the Grange in 1990 and is a seventh-degree member. Jodi

served as youth chairman, assistant junior leader, and fair display chairman for Lincoln Grange. She is also involved in the Pomona Grange, as well as the State Grange. She received Best of Show at the Eastern Regional Youth Conference in public speaking in 2004.

At school, she helped organize winter dances, canned food drives, and pizza parties. She is also currently serving as class treasurer in school. She was also involved in a Thanksgiving feast for the community, an Easter egg hunt, and a Fourth of July picnic. She has been nominated as the Huntington County Outstanding 4-H girl, served as the alternate Huntington County Dairy Princess, and has received national recognition in the Woman's Christian Temperance Union essay and poster contest.

Her Grange and community volunteer work includes: litter pick-ups, visiting the elderly at Christmas, and filling backpacks for children. Jodi also mentored an 11th grader in Spanish, raised money for the local library, and donated clothing and toys. She has also successfully recruited four new Grange members.

Mentors Dustin and Jodi helped the Horizon Leadership Ambassadors find where things were at the hotel, involved those who were reluctant to become involved, assisted the Director with details of the convention, acted as facilitators for workshops when needed, and provided valuable input as to age-appropriate activities.

---

## Best of Show Winners Perform at National Convention

By **Cindy Greer**, Youth Director

The Best of Show winners in the National Grange Public Speaking and Sign-a-Song competition at the Regional Youth conferences had the opportunity to showcase at the National Grange convention in Columbus, Ohio. The individuals who received Best of Show awards are:

### Eastern Region

#### Public Speaking –

Meredith Fulton, North Carolina (13-19)

#### Sign-A-Song –

Susan Waxler, Pennsylvania (novice)

### Mid-West Region

#### Public Speaking –

Tracy Blasingame, Illinois (13-19)

#### Sign-A-Song –

Tracy Blasingame, Illinois (Novice)

### North East Region

#### Public Speaking –

Johannah Barringer, NY (13-19)

#### Sign-A-Song –

Johannah and Christina Barringer, NY (Group)

### Great Plains Region

#### Public Speaking –

Callie Stiles, Kansas (20-29)

#### Sign-A-Song –

Samantha Martin & Rosalie Mendoza, Texas (Group)

### Western Region

#### Public Speaking –

Katie Squire, California (30+)

#### Sign-A-Song –

Marta Kroeger, California (novice)

The participants received \$100 for showcasing at the National Convention. Individuals who earned first place in their state competitions had the opportunity to compete at the regional level. There are three age divisions in public speaking and two categories that are eligible for Best of Show. The age divisions are 13-19, 20-29, and 30-plus. The categories are prepared speech (4-7 minutes in length) and Grange elevator speeches (90 seconds or less).

The three categories in the Sign-A-Song contest are novice, hobbyist, and group. In addition to these contests there is also an impromptu public speaking contest, which requires no state elimination, but these entries are not eligible for Best of Show awards. Cash awards were given at the regional conferences.

Regional youth conferences were held in Pennsylvania, Connecticut, Illinois, Colorado, and Washington. The contests began at the conferences in April and finished in August. Regional conferences will be held in North Carolina, Vermont, Texas, Iowa, and Idaho in 2006.

*Your contributions to the Grange Foundation Youth Leadership Fund make valuable programs like this possible. To contribute, please send your contribution to the National Grange, Attn: Youth Leadership Fund, 1616 H Street, NW, Washington, D.C. 20006. All checks should be made payable to the Youth Leadership Fund.*

# Program Materials Available to Local Granges

By **Dori Gedris**, Marketing Director

Information about involving your Grange in the Words for Thirds Program – the Dictionary Project – is now available. The program packets include: an instruction and presentation guide, a sample letter to send to schools,

a dictionary project overview, an order form, a participation form, a sample press release, and a sample media advisory.

The National Grange is offering a ready-to-present program about the Kelley Farm. The program is either available on a CD or on overheads. Complete with beautiful pictures of the farmhouse, the farm, animals, and events, the program will bring you up to date on happenings at the farm. The program comes complete with a narrative.

Methamphetamine Labs are a grow-

ing problem across the country. Inform and educate your members and your community with a ready to present program and informational fact sheets. The program is available either on CD or overheads and is completely scripted. The program and fact sheets will provide information to help alert you to signs of labs and abuse and who to contact for assistance. Upon request, your fact sheets will be customized with your local Grange information. You will receive 50 fact sheets. Additional quantities can be requested. Use of

Please select the programs you are interested in and return the form to the National Grange.

**Dictionary Project**

**Kelley Farm (select one)**

CD

Overheads

**Methamphetamine Labs (select one)**

CD

Overheads (50 sheets will be sent with your request)

If you would like the fact sheets to be customized with your local Grange information, please provide the following:

Grange Name and Number \_\_\_\_\_

Contact Person \_\_\_\_\_ Contact Phone Number \_\_\_\_\_

**Please send the program materials to:**

Name \_\_\_\_\_

Address \_\_\_\_\_

City \_\_\_\_\_ State \_\_\_\_\_ Zip \_\_\_\_\_

Phone Number \_\_\_\_\_

Grange Name and Number \_\_\_\_\_

Please return this form to:

National Grange  
Attn: DoriAnn Gedris  
1616 H Street, NW  
Washington, D.C. 20006

# Dogs for the Deaf Video and Demonstrations Available

By **Dori Gedris**, Marketing Director

The National Grange is pleased to announce that it has several Dogs for the Deaf videos available on loan to local Granges.

The video is a 15-minute presentation that tells the story of Dogs for the Deaf in Central Point, Oregon. The video shows how Dogs for the Deaf finds, trains, and places hearing dogs.

Demonstrations by recipients with their own hearing dog may also be available for your Grange. To reserve the video and inquire about having a live demonstration, please complete the form to the right and return to the National Grange.

Name \_\_\_\_\_

Address \_\_\_\_\_

City \_\_\_\_\_ State \_\_\_\_\_ Zip \_\_\_\_\_

Phone Number \_\_\_\_\_

Grange Name and Number \_\_\_\_\_

Yes, I would like to borrow the Dogs for the Deaf Video. I am planning to show the video on \_\_\_\_\_.

We ask that you promptly return the video to the National Grange so that we can share the video with others.

Yes, please contact me about scheduling a demonstration with a hearing dog and a recipient.

The availability of a demonstration is based on the availability of the hearing dog recipient.

Please return this form to:

National Grange  
Attn: DoriAnn Gedris  
1616 H Street, NW  
Washington, D.C. 20006

# Use of Proprietary Marks

By James L. Bikoff, Esq.

The National Grange has been using its **GRANGE** marks for over 100 years and built up considerable goodwill in them. Trademarks, a corporate asset, must be protected against misuse. Because of the extremely valuable nature of **GRANGE** marks, minimum standards of care should be exercised by the National Grange, Subordinate Granges, and other authorized users of the marks; outside or third party use should be the subject of prior written approval or a license agreement.

U.S. trademark law places the burden on a trademark owner to take steps to police and/or enforce its trademark rights. If these rights are not protected or if the trademark owner fails to take action to enforce its rights by allowing misuse of its marks, the goodwill in the marks will erode. Such a failure to take action is considered, under U.S. trademark law, to be acquiescence when the misuse takes place by a third party; when the misuse occurs at the hands of the trademark owner and/or its authorized users, it can be considered “abandonment” of the mark. In both instances, the trademark owner may be precluded from taking action against subsequent third-party users under the doctrine of laches (i.e., “slumbering on one’s rights”) or simply the dilution and/or erosion of rights in and/or to the marks. At that point, the marks risk falling into the public domain.

The National Grange owns the following marks, along with certificates of registration, issued by the U.S. Patent and Trademark Office, for such marks:

GRANGE, NATIONAL GRANGE, P OF H GRANGE & Design and NATIONAL GRANGE OF THE ORDER OF PATRONS OF HUSBANDRY for a variety of printed materials, for educational assistance and recreational activities, and for association and charitable services in connection with the quality of family life in farm, rural, and suburban communities.

THE GRANGE FOUNDATION for endowing scholarships and funding scientific, educational, and charitable services.

VIEW FROM THE HILL for newsletters on national legislative affairs.

Authorized users of the **GRANGE** marks – such as employees, affiliates, Grange members, Subordinate Granges, etc. – must be acquainted with and educated as to the rights and obligations that arise from trademark ownership. It is very important that such persons become familiar with the basic concepts of proper trademark use and learn to identify and report suspected misuse to appropriate Grange officials so such instances can be brought to the attention of trademark counsel.

When an instance of suspected misuse of a mark is identified, several factors are taken into consideration with respect to whether enforcement action should be taken. These factors include, but are not limited to, the visual and/or phonetic similarity of the marks, the goods and services offered under the marks, the channels of trade and target audiences to which the marks are directed, the likelihood of confusion as to the origin or source of the marks, and, of course, any instances of actual confusion.

Past instances of enforcement actions we have undertaken on the Organization’s behalf to protect its rights in the **GRANGE** marks include preventing use of the mark **GRANGE PRODUCTS** for cigarettes, and the marks **GRANGE PRIME STEAKHOUSE AND WINE BAR**, and **THE GRANGE HALL** for restaurant services. To prevent loss of protection, dilution, or erosion of rights in **GRANGE** marks, the following guidelines should be maintained:

- Marks should be distinguished from surrounding text by using bold or stylized font, placing the mark in “quotes,” or using the mark in a stylized form or logo type that has become associated with the mark (such as the well-known COCA-COLA script).
- A trademark or service mark is technically a proper adjective used to modify a generic noun; it should always be used in the form in which registration has been sought, with correct spelling, never abbreviated, never pluralized unless, of course, the mark itself is a plural (such as SKITTLES candies), or used in the possessive, never used in mutilated or bastardized form, and never used as a verb or a noun itself.

- A good test for proper usage is to remove the mark from the sentence and determine whether the sentence still makes sense.

While it is not necessary to “notice” every single use of trademarks or service marks in advertisements or other promotional materials, proper marking should be featured at least once in all printed matter, either the first time the trademark or service mark is used, or with the most prominent use of the mark (for example, at the top of a page). One of the primary ways affirmatively to protect a mark is through use of the TM, K or ® symbol.

A “license” is an agreement between the owner of a mark or work (the “licensor”) and another entity (the “licensee”) in which the licensor permits the licensee to use the mark/work in commerce. Trademark licenses are usually committed to writing in the form of a contract specifying the scope of the license and will identify the mark or work, the licensor and licensee, any royalty or other payment to the licensor, the right(s) to be licensed, and the nature and quality of the goods and services the licensee will offer under the mark (for example, baseball-style caps or lapel pins). If a licensor does not exercise sufficient quality control over the licensee, the mark may be deemed abandoned.

Mr. Bikoff is a partner in the trademark law firm used by the Grange. Subordinate, Pomona, and State Granges are urged to follow these guidelines closely. If a Grange buys merchandise with logos from a vendor other than the National Grange, the Grange must be diligent in dealing with the vendor. National owns these marks; anybody can misuse and lose them for everybody.

*If you have questions about the Grange trademark, please contact Richard Weiss, National Grange Chief Operating Officer, at 1-888-447-2643 ext. 117.*

## Did You Know?

In honor of the Grange’s centennial in 1967, the U.S. Postal Service issued a commemorative stamp. The stamp cost 5 cents.

# Around Washington, D.C. and Beyond

## Legislative Department Attends Citizens Flag Alliance Event

Recently members of the Citizens Flag Alliance (CFA) visited Capitol Hill to support the recent Flag Amendment (S.J. Res. 12) introduced in the Senate. The CFA is made up of 145 organizations, serving over 20 million members, and is dedicated to protecting the American flag through amending the con-



CFA Board Chairman Major General Patrick H. Brady and Peter Banks

stitution. The National Grange is a standing member in the CFA.

The Supreme Court ruling of *Texas v. Johnson* allowed for the desecration of the flag under the protection of the First Amendment. The CFA looks to amend the constitution in order to give the power over laws regarding the flag back to Congress and the people. The amendment has already passed on the House side and is closer than it has ever been to passing in the Senate.

One of the issues brought up during the meetings was the bill (S. 1370) introduced by Sen. Bennett (R-UT) to the Senate that provides a narrow protection of the flag. The bill covers only three instances when someone may be prosecuted for their actions toward the flag. These actions include: any desecration of the flag that incites violence, stealing a flag from federal land, and damaging someone else's flag.

This bill allows Representatives to take a disingenuous stance on the flag issue because, without the amendment, it is widely known that the bill will be easily overruled by the previous Supreme Court decision. While some feel the issue is not important enough to warrant a constitutional amendment, many others embrace S. 1370 because it permits them to display their patriotism while knowingly voting for a bill that will ultimately fail.

The Flag Amendment is more effective than the bill offered by Sen. Bennett because it protects any bills, following the passage of the amendment, from the Supreme Court. Once the amendment is passed, Congress can pass a bill protecting the flag with the backing of the Flag Amendment.

Although each staffer was fully aware of the Flag Amendment, and many receptive to our stance, the political environment proved to be somewhat of a hindrance in moving forward on the amendment. The recent nomination of a new Supreme Court Justice has diverted attention away from the Flag Amendment, and it is uncertain when the amendment will be voted on.

The National Grange would like to especially thank the American Legion for providing the necessary arrangements and information toward this group lobbying effort. The Legion's dedication to this issue has spanned over a decade and their tireless efforts look like they may soon come to fruition.

Legislative Assistant Peter Banks took part in the lobbying effort and was able to meet with many Senate staffers who represented states where the Grange is present. Response to the Grange was favorable, and many of the staffers mentioned their awareness of the Grange as an important part of rural life in America.

## Conservation Discussed at Recent White House Conference

The White House Conference on Cooperative Conservation's website states that in August 2004, President George W. Bush signed an Executive Order entitled, *Facilitation of Cooperative Conservation*, which directs Federal agencies that oversee environmental and natural resource policies and programs to promote cooperative conservation in full partnership with state and local governments, as well as tribes and individuals.

The order directed the Chairman of the White House Council on Environmental Quality to convene a White House Conference on



Cooperative Conservation. The Departments of the Interior, Agriculture, Commerce, Defense, and the Environmental Protection Agency co-hosted the event. Recently, invited representatives from the public and private sectors convened in St. Louis, Missouri to discuss the advancement of this cooperative conservation vision.

The National Grange's Legislative Director Leroy Watson was among those in attendance. Watson listened to several lectures about conservation, expressed the Grange's views on conservation, and vowed to work with other conference attendees to advance the nation's goals on conservation.

## National Grange Believes Private Grain Inspections Are a "Bad Idea"

The National Grange recently joined with 43 other agriculture and trade-oriented orga-

nizations to urge Congress to strike Section 2 of H.R. 3421 and S. 1582, which expands the authority of the Secretary of Agriculture to authorize private entities to perform official inspections of our grain exports.

"The export of agricultural products from the United States forms the cornerstone of America's success in the global export market," the letter said. "The Federal Grain Inspection Service, with its 30-year history of cutting-edge inspection success and the guarantee of impartial and honest trading, is the vehicle that delivers our agricultural products to the world...the proposed issuance of rubber-stamped traditional USDA certificates for inspections actually completed by industry-paid private inspectors will strike at the heart of the world's definition of integrity and honest trading practices."

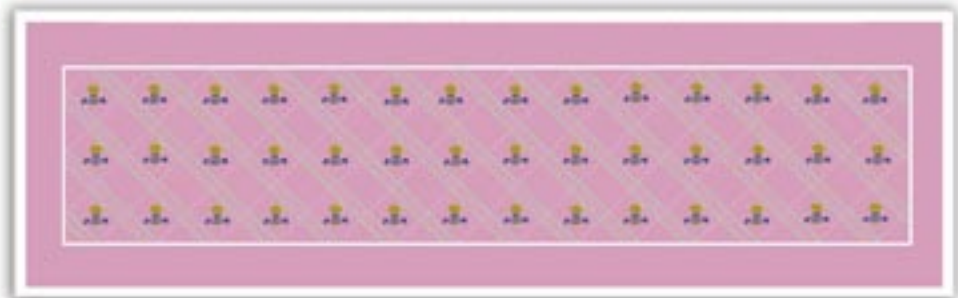
The Grange believes that the guarantee of unbiased and honest, government-backed trading is one of the most essential of our global agricultural marketing tools.

# Grange Store



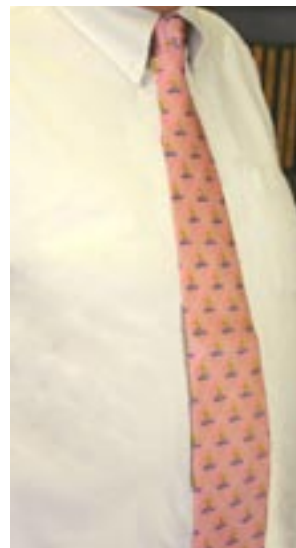
**Padfolio**

Navy Zippered Padfolio debossed with the Grange emblem  
Item # 920  
\$18.00



**Ladies Silk Scarf**

Pink 100% Silk Tie  
Item #919  
\$20.00



**Men's Silk Tie**

Pink 100% Silk Tie  
Item #918  
\$20.00



**Fleece Blanket**

Navy fleece blanket with carrying handle embroidered with the Grange emblem  
Item #901  
\$20.00

## Grange Order Form

Item #	Quantity	Size	Color	Description	Price per Item	Total

Ship to: \_\_\_\_\_  
 Street Address: \_\_\_\_\_  
 City: \_\_\_\_\_ State: \_\_\_\_\_ Zip Code: \_\_\_\_\_  
 Grange Name and Number: \_\_\_\_\_  
 Phone Number: \_\_\_\_\_ Email Address: \_\_\_\_\_

Shipping/Handling Charges:  
 Orders: \$1.00-\$25.00 = \$4.00  
 Orders: \$25.01-\$50.00 = \$6.00  
 Orders: \$50.01-\$75.00 = \$8.00  
 Orders: \$75.01-\$125.00 = \$10.00  
 Orders: \$125.01 and more = \$12.00

<b>Subtotal</b>	_____
<b>Shipping &amp; Handling</b>	_____
<b>Total</b>	_____

Make checks/money orders payable to the National Grange and enclose with order.  
 Send order and payment to: National Grange - Grange Store  
 1616 H Street, NW  
 Washington, D.C. 20006

Payment Method:  Check/Money Order     Credit  Visa  Mastercard  Discover  
 Cardholder Name: \_\_\_\_\_ Cardholder Signature: \_\_\_\_\_  
 Credit Card Number: \_\_\_\_\_ Expiration Date (mo/yr) \_\_\_\_\_ Billing Zipcode \_\_\_\_\_

For faster service, please call 888-447-2643 ext. 103, fax 202-347-1091, or E-mail sales@nationalgrange.org

**Now Accepting Credit Cards**

# Grange Store



**Drawstring Backpack**

Lightweight nylon drawstring backpack available in Red with the Junior Grange logo or Navy blue with the Grange emblem  
 Item # 915R – red backpack with Junior Grange logo  
 Item #915N – navy backpack with Grange emblem  
 \$5.00



**Umbrella**

Royal blue and white umbrella with auto open feature imprinted with the Grange emblem  
 Item #914  
 \$10.00



**Corn Koffee Keg**

10.5-ounce mug made from 100% US Corn Plastic in maize yellow with blue Grange emblem. Microwave safe.  
 Item #916  
 \$7.00



**Corn Commuter Mug**

17-ounce travel mug made from 100% US Corn Plastic in maize yellow with blue Grange emblem. Microwave safe.  
 Item #917  
 \$10.00



**Grange Car Magnet**

Grange Car Magnet in the shape of the seven-sided emblem  
 Available in Blue or Gold  
 Item #912B – Blue Car Magnet  
 Item #912G – Gold Car Magnet  
 \$3.00



**Apron**

Long Apron with pockets. Imprinted with the Grange emblem and “What’s Cookin in the Grange”  
 Available in Navy or Denim.  
 Navy Item #905N  
 Denim Item #905D  
 \$15.00



**Apron**

Cobbler Style Apron imprinted with the Grange emblem and “What’s Cookin in the Grange”  
 Item #904  
 \$15.00



**Fanny Pack**

Navy Fanny pack with the Grange emblem  
 Item #921  
 \$10.00

# Not Knowing the Dates Could Cost You

Medicare prescription drug coverage is a useful, new program designed to help current and future recipients of Medicare pay for their prescription drugs. Although the new insurance coverage program is voluntary, it is extremely important to know certain sign-up dates in order to avoid paying a late fee penalty.

Enrollment for the drug coverage begins on November 15, 2005. Current beneficiaries can either join a plan online or sign up by phone. Trained professionals will be available to answer any questions that may arise.

The last day in 2006 for current beneficiaries to sign up for coverage is May 15, 2006. If you are already covered by Medicare and do not join by this date, a late fee penalty will be assessed if you sign up after that date. The penalty comes out to about one percent for every month that the person fails to join a drug coverage plan. The resulting premium is consequently increased by this amount each month.

Effective immediately, current beneficiaries can apply to receive extra help with drug plan costs if they have limited income or resources. To apply, go to the Social Security Administration website ([www.ssa.gov](http://www.ssa.gov)) or call their toll-free number (1-800-772-1213). If you are a Medicare beneficiary and also receive state Medicaid benefits you will be automatically signed up for a subsidy.

Knowing these important dates for Medicare prescription drug coverage will save you money on prescription drugs, while helping you to avoid preventable late fees. So mark November 15, 2005 down on your calendars and join a Medicare prescription drug plan sooner rather than later.

---

## Getting To Know Medicare

By **Peter Banks**, Legislative Program Assistant

On December 8, 2003, President George W. Bush signed into law the most significant change in Medicare's history. The Medicare Modernization Act (MMA) made many important changes to the original Social Security Act, including an addition to Medicare called Medicare Prescription Drug Coverage (Part D).

The Medicare drug plan is an outpatient prescription drug benefit plan, designed to relieve some of the pressure felt by senior



citizens buying prescription drugs. Of the 43.1 million Medicare participants, 29.3 million are expected to join the Medicare drug plan in 2006. It is extremely important for all citizens, both senior and other, to educate themselves on the intricacies of the new Medicare prescription drug coverage and to be aware of all mandatory sign up dates before the program goes into effect on January 1, 2006.

As Olympia Snowe (R-ME) stated, "It is time that we provide clarity for our seniors, informing them of the services available that will lower the costs of their prescription drugs and strengthen the overall integrity of the Medicare entitlement."

### What Is Medicare Prescription Drug Coverage (Part D)?

Medicare prescription drug coverage is a voluntary government benefit program that looks to confront the cost of prescription drugs. Anyone who is covered by Medicare Part A (covers hospital costs and other inpatient services) or Medicare Part B (covers doctors visits and other outpatient services) is eligible to receive Medicare prescription drug coverage.

After signing up for the program, the beneficiary will have a wide variety of Medicare prescription drug plans to choose from. The first major plan available is a stand-alone prescription drug plan (PDP). This plan only covers drug benefits, with all other medical coverage falling under Part A. The other option is called a Medicare Private Plan (Medicare Advantage) and is found in HMOs and other health care insurance coverage plans.

Both of these plans provide basic, prescription service to its participants, with some variation on cost and the type of drugs offered. Because the plan is voluntary, people eligible for Medicare prescription drug coverage are given at least two options to

choose from in their area. This allows the beneficiary to find the program best serving their own needs and interests.

### If My Income Is Low, Can I Receive Extra Help In Paying For My Medicare Drug Benefit?

Once again, it is important to be aware of all the possible help you may receive under Medicare prescription drug coverage. People with Medicare whose income falls under 150 percent of the federal poverty level and have limited assets, may be eligible for extra help with drug plan costs. Unfortunately, the federal government does not automatically sign someone up for this assistance without the individual applying for aid.

There are two different ways to go about requesting/receiving extra help in paying for Medicare prescription drug coverage. If a beneficiary is a "dual eligible," meaning a person who is eligible for both Medicare and Medicaid, it is unnecessary to sign up because dual eligibles are automatically enrolled in a plan.

For individuals who are not on both Medicare and Medicaid or are unsure if they qualify for assistance, there are websites and toll-free phone numbers designed to facilitate the signing-up process. As mentioned before, Medicare prescription drug coverage is a voluntary program, but people who sign up late will be faced with higher premiums and other fees. Medicare prescription drug coverage does provide assistance to those struggling the most to pay for prescription drugs, but a strong grasp between the different options available may be the difference between saving money and paying extra.

### Is Medicare Prescription Drug Coverage the Same As the Medicare Approved Discount Cards?

Although Medicare prescription drug

coverage and the discount cards are designed to help people with Medicare cover the cost of prescription drugs, they are not the same. There are crucial differences between the two and gaining a basic understanding of both is extremely valuable.

To start, the Medicare prescription drug coverage gives the beneficiary insurance coverage, while the discount card provides merely what it says in the card name - a discount. Introduced in June 2004, the cards provided an essential bridge between the signing of the Medicare Modernization Act in late 2003 and the institution of Medicare prescription drug coverage on January 1, 2006. The discount cards can still be used until January 1, 2006 or if the individual decides to not sign up for the program until May 15, 2006.

The other difference between the two is possible penalties. Although both were voluntary, there was no time frame or limit in signing up for the discount card. However, a beneficiary of Medicare prescription drug coverage may have to pay a premium penalty (a monthly penalty of one percent of the monthly cost) if they fail to sign up in the allotted time frame. Making the transition from a discount card to Medicare prescription drug coverage is an important issue in the upcoming months and much of the responsibility falls on the Medicare recipient or family and friends.

### **How Much Will the Medicare Prescription Drug Coverage Cost?**

The cost of prescription drugs hinges on the benefit plan the individual chooses. Each plan has a great deal of flexibility, and it is up to beneficiaries to find the right plan for their needs.

Basic costs under all coverage plans include a monthly premium, an annual deductible (no more than \$250 in 2006), and varying amounts of coinsurance (the amount will depend on how much the individual spends on prescription drugs). Also, in the 2006 version of all drug coverage plans there is a coverage gap. This gap occurs between \$2,251 and \$5,100 of total drug cost and means that no plan will pay for the expense of prescription drugs between these two boundaries. Once the \$5,100 total drug cost is exceeded, the beneficiary will be responsible for only five percent of the prescription drug cost, with no ceiling to the costs. Provided in this newsletter is a chart that better explains the specific cut offs and payments found in most coverage plans.

There are also regulations regarding the

amount of out of pocket expense a beneficiary can absorb before a drastic reduction in payment occurs. After spending a predetermined out of pocket amount, in 2006 it is \$3,600, the beneficiary will receive the same five percent responsibility in prescription payments as the \$5,100 cap assumes. It must be noted that only the drugs offered by the beneficiary's plan will fall under the discounted catastrophic rate and be counted toward out of pocket expenses.

### **What Prescription Drugs Are Covered Under My New Benefit Plan?**

Each benefit plan has its own formulary, which is a list of drugs covered under that specific plan. Within the formulary, the benefit plan must offer at least two kinds of drugs under each drug class, giving the beneficiary a choice between the two. It is important to be aware that a benefit plan can change the drugs offered under their formulary, but a 60 day notice of the change, consisting of a letter and a post on the website, is required.

Although benefit plans are required to offer drugs in specific classes, as mandated by the Medicare Modernization Act, separate plans may provide non-specified drugs as an additional benefit. Other drugs are not permitted by law to be offered by all benefit plans. These include drugs for anorexia, fertility, cosmetics, and relief from cold-like symptoms. All drugs taken for these symptoms and others will not be considered as out of pocket spending and will not count toward the \$3,600 limit.

Other regulations that are important to watch out for when considering a benefit plan are Prior Authorization and Fail First Requirements. Prior Authorization requires the beneficiary to receive permission from the plan before the drug is prescribed, while Fail First Requirements stipulates a beneficiary tries the plan's preferred drug and finds it ineffective before prescribing to other drugs in the same category. Both of these restrictions are accepted by Medicare and can be found in a wide number of benefit plans.

### **Do I Still Need to Sign Up If I Already Have Health Coverage?**

If a person already has health coverage it is still necessary for them to let Medicare know, so that they will not be penalized when they try to sign up for the Medicare prescription drug coverage in the future. Although the person on Medicare may be presently receiving health benefits from a workplace or a union, it cannot be stressed enough how important it is for the beneficiary to in-

quire about this issue. Below are a couple of simple steps that will help people avoid any future penalties.

First, the person with Medicare needs to know if their current drug coverage is at least as good as what is being offered by Medicare Prescription drug plans. The term for this is creditable coverage. People can find out if their coverage is "creditable" from their current plan, or they can contact their plan to get this information.

If the drug coverage the person with Medicare currently has is not as good as the Medicare prescription plan in their area, then the person with Medicare needs to decide whether or not to stay with their plan or change coverages. Although it is not necessary to change, the beneficiary must be aware that they will be charged the normal one percent penalty for every month they wait to change if they decide to remain with their present coverage.

If the Medicare recipient's drug coverage compares favorably with the Medicare prescription coverage offered, then the beneficiary once again has a choice. His choice is the same as the first example, but the person will not be penalized for signing up with a Medicare prescription drug coverage plan after their current health coverage ends.

### **So What Are You Going To Do?**

Dr. Mark McClellan, administrator of CMS, the Centers for Medicare and Medicaid Systems, described the new task ahead when he said, "As we take all of these steps to make Medicare better, especially for our seniors and people with a disability who have limited means and great needs, I need to ask you for a commitment as well. We need your partnership. We are working to be effective partners. We've tried hard to listen to all the concerns and issues that you've brought up so far, and to work to address them. As a result of all your constructive input, we are keeping on track with our tight schedule for bringing better coverage to Medicare."

The Medicare prescription drug coverage program is designed to help people confront the costs of prescription drugs. Although the program appears confusing, it is important to educate yourself about the many options this new program provides. Asking questions and reading are the only ways to fully understand the intricacies that face you, and the answers are out there.

This information is not only important to those already receiving Medicare. Making yourself more knowledgeable about the new

# A Pioneer Hits the Road Again

By **Richard Weiss**, Chief Operating Officer

In 1950, Berta Vesper was the first to apply for the Germany/USA Friendship Program. The program, sponsored by the Grange and funded through the Marshall Plan, brought German rural youth to the United States for a one-year stay on a family farm and enrollment in a local high school. Berta qualified by being able to speak English and living on a German farm. The application process was not easy. Berta had to take several tests for a selection committee made up of American military and German farm organizations. Back in the U.S., a Grange committee did the final review to determine who would participate in the program.

After months of hearing nothing, Berta had given up on the idea of going to the United States. Then, out of the blue, she got a notice to be ready to go in two weeks, and at age 18, she was on her way to the United States. When she arrived there was not an immediate availability for her so she lived with Wib and June Justi for two weeks near Columbus, Ohio. Then she joined Grangers Bob and Jane Freeland on their Wayne County, Ohio dairy farm.

Asked if she was a little nervous about coming to the U.S., Berta said “not at all.” She was looking forward to the move and ready to learn more about the U.S. culture. Did she experience any animosity because she was German and it was shortly after World War II? Only once and she was not upset by it. She found Americans to be friendly and understanding and felt very much at home with her host family.

From 1950 to 1956, Grange families hosted 500 German youth. Those that came first in 1950 have adopted the name “pioneers.” Berta has been a pioneer on many fronts during the last 55 years.

When the host families started holding reunions beginning in 1958, Berta was the first German to cross the Atlantic and attend the reunions. Berta and Hasso von Samson, an exchange student hosted by Corey and Mary Key in South Carolina, were the “movers” in starting the international reunions, the first being held in Germany in 1994 with 40 Americans and 100 Germans in attendance. Since then there have been international reunions in Colorado in 1996, Germany and California in 2000, celebrating the program’s 50th anniversary, and Germany in 2004. The

Blacksburg event was the 50th international reunion.

After Blacksburg, “Pioneer” Berta hit the trail again. She, Wib, and June traveled through Virginia and Pennsylvania visiting host families that were unable to make it to Blacksburg. Their journey included a stop at National headquarters in Washington, D.C., where they met with staff and toured the building.

Once a pioneer, always a pioneer – Berta Vesper.



Berta Vesper

## Medicare cont'd

Medicare prescription drug coverage allows you to help your grandparents, friends, and neighbors in a time when they need you the most. As Dr. McClellan stated before, it is important that we work together in order to help those who need assistance.

## The National Grange and Medicare Part D

By **Peter Banks**, Legislative Program Assistant

The National Grange supports the new Medicare drug plan and has displayed its encouragement through a number of avenues. Recently, both Dick Weiss, COO of the National Grange, and Leroy Watson, Legislative Director of the National Grange, have participated in events designed to get the word out about Part D and help those who are eligible to sign up for the program.

In May 2005, the National Grange joined Partnership for Prescription Assistance (PPA)

and helped launch its “Help is Here” express bus tour in Washington, D.C. The bus was designed to make enrollment easier by providing 10 computers and six phones that allow people to sign up on-site.

Mr. Weiss was on hand for the launch and expressed his excitement about the partnership between the Grange and the PPA when he said, “The Grange will do all it can to help the Partnership for Prescription Assistance reach rural Americans who need a helping hand with their prescription drug costs. The ‘Help is Here’ express bus tour is a great idea, and we are going to guide it down some country roads this year and next year.”

Rural areas are some of the most challenging places for the PPA to reach eligible patients. The National Grange, representing rural citizens, is strongly supporting the PPA for this reason.

“Rural residents, who generally have lower incomes than urban dwellers, spend a higher proportion of personal income on prescription drug coverage than the urban residents. The higher proportion of out-of-

pocket prescription drug costs among rural working families increases the risk that they will either neglect their medications or take lower dosages,” said Bill Steel, President of the National Grange.

On May 13, 2005, National Grange Legislative Director Leroy Watson was invited to participate in a taped interview with Dr. Mark McClellan, the administrator of Centers for Medicare and Medicaid Systems (CMS), to present the Grange’s perspectives on successful outreach and education efforts to seniors regarding the new Medicare Part D prescription drug benefit.

Mr. Watson spoke about the Grange’s effectiveness in reaching out to seniors in rural areas. He pointed to the high percentage of our nation’s seniors already living in our rural communities and the importance of community-based organizations in reaching these individuals with information.

Dr. McClellan inquired about the Grange’s approach to some of the communications issues facing organizations reaching out to the elderly, such as providing information that is easy to

# 55 Years of Friendship and Still Going

By **Richard Weiss**, Chief Operating Officer

More than 40 members of the Grange Germany/USA Friendship Program gathered in Blacksburg, Virginia, home of Virginia Tech University, to celebrate 55 years of friendship and camaraderie. The event marked the 47th reunion of 1950s German exchange students and their host families. Some attendees were sons or daughters of the original participants. Thus, the friendship torch is being carried on to future generations.

At their 1949 annual convention, National Grange delegates voted to participate in the international farm youth exchange programs to “promote better farming and improved world understanding and goodwill.” From 1950 through 1966, USA Grange families hosted 1,718 exchangees from 39 countries under the National Grange program. More than 500 exchangees were German rural teenagers who came to the USA between 1950 and 1956.

This was a special project funded by a combination of money from the U. S. State Department (Marshall Plan), the National Grange, State Granges, local Granges, and host families. Known as the Grange Germany/USA Friendship Program, the project was designed to provide exposure to democracy and freedom of choice and to encourage continuing communication and visitation between the exchangees, hosts, and succeeding generations.

In 1956, the National Grange sponsored

a Germany trip for former host family members and cooperators, who spent several weeks living and working on farms of former exchangees. They dubbed themselves the “Group of 20.” The “Group of 20” showed up



Grange Germany/USA Friendship 2005 Reunion Participants

at the 1958 National Grange Convention and declared that they were having a reunion.

Thus, began an annual tradition that continues today. It was not long before the Germans heard about these reunions and began crossing the Atlantic to attend. Then, in 1994, the Germans hosted the first international reunion in Korbach, Hessen, with 40 Americans and 100 Germans in attendance. Since then, international reunions occurred in 1996 in Colorado, 2000 in Germany and California, celebrating the programs 50th anniversary, and 2004 in Germany.

This year’s Blacksburg event included a display room with hundreds of photographs and articles covering the exchanges and

the reunions, breakfast at the Prices Fork Grange, a bus tour of the surrounding Blue Ridge Mountains, a local historian describing the strong German presence in the Blacksburg area, a Lutheran Church service and church picnic, a rocking bluegrass band, and much sharing of memories.

Local hosts were Herb and Sylva Stovener. Herb was a 1952-53 exchange student in New York. He returned to the United States, earned a degree from Cornell University, where he met Sylva (at Cornell University Grange), and has taught rural economics at several U.S. universities, ending up at Virginia Tech.

Participating in the festivities were Jim Taylor, Virginia State Grange President, and Dick Weiss, Chief Operating Officer of the National Grange. Weiss complimented the group on “keeping a good thing going.” These reunions, individual visits, ongoing correspondence, and participation of second and third generations continue to achieve the program goals of building goodwill, friendship, and understanding and keeping intact the program’s code – “R-R-S: Respect, Responsibility and Sharing.” After 55 years the Grange Germany/USA Friendship Program is alive, well, and looking to the future.

GG/USA Program information is available from Coordinators Wib and June Justi. To learn more, please write the coordinators at 384 Colonial Avenue, Worthington, Ohio 43085, call at 614-888-3950 or e-mail at [ibdwbj@aol.com](mailto:ibdwbj@aol.com).

## Opinions cont'd

more responsive to consumer complaints, or provides new service to 60 percent more previously underserved customers?

When the U.S. government investigated, it found that the missing ingredient in cable service is competition. Only six markets enjoyed wire-based competition for television service in 2003. In five of these markets, cable rates were 15 to 41 percent lower than in similar markets without competition. And in markets where satellite operators provide local broadcast stations, cable companies offer subscribers more networks than operators in areas without such competition. However, in the vast majority of markets, monopoly cable prices and offerings continue to prevail.

The only sure way to get more choices at

reduced costs is to allow other TV providers to compete. Industry analysts tell us that this competition would quickly bring about Internet TV, a way for consumers to have entire libraries of information or entertainment at their fingertips, a means for farmers in Freedom, PA to find new customers in Liberty, MO or for someone outside of Sioux City to engage in on-line recreational or cultural activities simultaneously with someone in Seoul or London. With customer satisfaction surveys rating cable companies near rock bottom in consumers’ esteem, competition could also alter the indifferent service that customers often receive from cable companies.

When can we expect such competition? Soon, if the Video Choice Act is passed or included in broader telecommunications legislation. The reason is the insistence of the

cable industry that its would-be competitors must be forced to receive regulatory clearance from 33,000 individual local government franchise boards. To gain approval from just one such board can take months or years, and many thousands of dollars to support filings and negotiations. For one small market, this process is a hassle. For a national market, it is a prescription to preserve cable monopolies well into the next decade.

For rural Americans there is more at stake in this legislation than new choices in entertainment and news. The same high-speed connections that can deliver thousands of on-demand movies could also deliver a wealth of broadband services that could lift the quality of life in towns across the country. It could bring the best teachers to the schoolhouse. It **“More Opinions” - page 16**

# Looking Back in Time - 1873

DOMESTIC MAIL NEWS.  
New York Times (1873-Corner 2nd Aug 3, 1873, ProQuest Historical Newspapers The New York Times) p. 7

## DOMESTIC MAIL NEWS.

### OBJECTS OF THE GRANGERS.

At a recent picnic of farmers in Missouri, Mr. T. R. Allen, Master of the State Grange, delivered a somewhat elaborate speech, in the course of which he described some of the objects of the organization as follows: "First, and not among the least, is its social feature. Heretofore we have been too isolated and scattered. We have ceased to take no time for recreation, social amusement, or the proper enjoyment of life. We have too much given ourselves up to digging and delving in the ground, and nursing petty prejudices that from mole-hills grew in time to mountains, estranging us from each other. This organization brings us into close contact, encourages a spirit of fraternity and sociability—makes us, in fact, acquainted with each other. This feature alone, if properly attended to, would be worth the trouble and expense of sustaining the organization. But this is not all. The organization has an educational feature. We encourage schools for our children, but some of us, although too old to go to school, are deficient in education. Every grange is a school for mutual improvement, in which we endeavor to encourage each other to read, to think, to investigate, and to discuss subjects that pertain to our own interests in a familiar way. We expect thus to teach our people to do their own reading, thinking, investigating, independent of leaders. We expect thus to throw aside all prejudices of a political or religious character, and to discuss questions, coolly, calmly, dispassionately, with an honest intention to search after the truth. If we have lost caste, and there is any real or just cause for other classes of people to look down upon us, it has been our own fault, and results from the want of social and intellectual culture. We have been allowing others to do our reading, thinking, speaking, voting, law making. We have been executing the laws by proxy, instead of doing it ourselves.

I will now touch upon some of the more material benefits of the organization. These are so numerous that I can only allude briefly to a few. In the purchasing of our supplies, especially agricultural implements, it has already been decided and proven that great pecuniary advantage may be gained by purchasing directly of the manufacturer instead of from his agents. This advantage is so obvious that I need not dwell upon it at great length. The matter of crop reports requires more extended explanation. These are of the first importance, and can be obtained in no way so well as through our organization. By crop reports I mean crop statistics, and it is a remarkable fact that our Government has never supplied us with anything reliable on this subject, or anything that was of any value to us. The manner in which the present crop reports are made up shows to every thinking man that they cannot possibly be correct. The system is itself wrong and bad. The sending out over the country printed slips with questions, and blank places for answers, to be filled by whosoever may get hold of them, is sure to fail of the desired object. They generally come into the hands of Post-office clerks, who fill them up and send them on to Washington, and from the results thus acquired our statistics are made up. Only a few farmers ever get these tables, and it is well it is so, for they are unreliable. Besides this they are not compiled and sent out until the succeeding year, too late to be of any use to those for whom they are intended. Through the granges we may obtain correct and reliable statistical information in regard to our crops. I will illustrate by taking the grange here. We will say it is composed of 100 members—the number may be more or less, it makes no difference. I will take the wheat crop for an illustration. It will apply to any class of crops or any kind of animals. Take the wheat crop in the field, when the farmers are done seeding their wheat, each man reports to the Secretary the number of acres he has sown in wheat. If it is in the Spring, the same course is pursued with the Spring wheat. It is made the duty of each man to report as soon as he has finished seeding. The result is, you have the acreage of 100 members belonging to the grange in question. Now, it is the duty of the Secretary of the local grange to report to the Secretary of the State grange. What one grange can do, every other grange in the State can do. The result is the total acreage of wheat in the State.

This calculation seems to be on the basis that all farmers are grangers. From month to month the condition of that crop may be reported during the season. But what is most important of all, is that after harvest, when the wheat is gathered and threshed, the total number of bushels is to be promptly reported. The total result being had at the Secretary's office of the State Grange, it is his duty to report it promptly to the Secretary of the National Grange. What one State can do every other State can do, and there we have the total amount of wheat raised in the United States. It is the duty of the National Grange to put all these separate figures into tabulated form, and the further duty of the Executive Committee of the National Grange to see that a sufficient number are printed for distribution among the members of the order. There need be no guess-work about this. The books of the Secretary show exactly how much wheat there is in each State. The reports are printed and sent off, the allotment for each State to the State Secretary. This may apply to every other crop—corn, oats, barley—I need not enumerate—or to any class of animals or productions. These reports are coming in from time to time in their season, and constantly being returned in the aggregate to the farmers who made

them. They are reliable; there is no conjecture here. We make them ourselves. There is no motive for the falsification of a figure. By the same system we obtain the demand and consumption in the United States during the year. Through the same medium we may obtain the probable foreign demand, as well as the speculators in these products now do. Then, being in possession of these leading commercial facts and features of supply and demand, we are placing ourselves in a condition in which we may be able to fix prices too. An incidental benefit of the system would be that we could prevent over-production in any certain direction, which frequently occurs now, through ignorance, not knowing what the supply of any given product may be. Knowing the supply and demand, we propose to fix prices, fair and equitable prices, that shall prevail until another crop is made. We don't propose to fix extortionate rates, but barely remunerative prices.

But the observer asks, "How can you arrange it so that the farmers will not sell?" They are, for the most part, in debt, and compelled to realize on their products as soon as they are ready for market. We propose to meet that difficulty by creating a fund—you may call it a bank, or what you please—and place it somewhere. We propose to build elevators, storehouses, warehouses. After we have fixed our prices for our wheat, we propose to store it there until we get it. When the poor brother comes and says he is bound to realize on his wheat, and must get it out and sell it, we tell him to get it ready for market as soon as he can, take it to our warehouse or elevator, where we have a competent man to grade it, receive it, give him a certificate for it, and give him a check on our bank for such money as his wheat is good security for. We will only charge him a very moderate interest on that advance. Now, if you can tell me how long the rest of you can do without eating, I will tell you how long that poor brother will have to pay a moderate interest on the money we have advanced him on his wheat. When the wheat is sold he gets, of course, his pro rata of the interest paid on the money advanced to him.

Speaking of female membership, Mr. Allen said: "Some object to us because we admit females to membership. We regard this as one of the important features of the order, especially in a social and educational point of view. It is a guarantee for good moral conduct in the grange. Where we can take our wives and daughters, we think it may be safely pledged that there will be no improper or immoral conduct."

Reproduced with permission of the copyright owner. Further reproduction prohibited without permission.

THE MASSACHUSETTS GRANGERS.  
New York Times (1873-Corner 2nd Aug 3, 1873, ProQuest Historical Newspapers The New York Times 1871-2002) p. 7

## THE MASSACHUSETTS GRANGERS.

### A STATE ORGANIZATION—STRENGTH OF THE ORDER.

Special Dispatch to the New-York Times.

GREENFIELD, Mass., Dec. 4.—A State grange of the Patrons of Husbandry was organized in this place to-day. Over 100 male and female grangers, representing the organization of the order now established in different sections of the State, were present, and in addition to the formal proceedings there were social festivities. The majority of the grangers gathered yesterday, and at a social meeting in the evening in the Town Hall held corner caucuses for the discussion of candidates for the mastership of the State organization, listened to speech-making and an address from Mr. Thompson, of Minnesota, one of the lecturers of the National Grange, on the objects of the order and its future prospects, heard good singing, and enjoyed an abundance of rural refreshments. The formal proceedings were in secret in the Town Hall this forenoon. All the granges were represented. After the adoption of a constitution and by-laws the following were chosen officers of the State grange: Worthy Master, T. L. Allen, of Conway; Overseer, A. J. Sawyer, of Harvard; Steward, George L. Wills, of Pittsfield; Assistant Steward, Henry E. Rice, of Barre; Chaplain, Luther Conant, of Acton; Treasurer, Charles Jones, of Deerfield; Secretary Benjamin Davis, of Ware; Gate-keeper, Franklin Bartlett, of South Deerfield; Cerco, Mrs. Franklin Bartlett, of South Deerfield; Pomoer, Mrs. A. J. Sawyer, of Harvard; Flora, Mrs. Charles Jones, of Deerfield, and Lady Assistant Steward, Mrs. Henry E. Rice, of Barre. On account of the uncomfortable weather, a public meeting arranged for the afternoon was not held, and after a collation in the hall provided by the Greenfield and Deerfield grangers, a private session was had, at which Mr. Thompson, of Minnesota, exemplified the secretwork of the order, and the officers were installed. The proceedings were then brought to a close.

There are now eighteen granges fully organized in the State, five more nearly ready to be organized, and a promise of others soon. The interest in the order steadily increases, especially in the western part of the State. The eighteen organized are in Greenfield, Deerfield, Northfield, Boston, Acton, Ware, Groton, Conway, Barre, South Deerfield,

Mendon, Harvard, Danvers, Pittsfield, Hadley, Amherst, Cheshire, and Palmer. These were all formed through the efforts of Mr. J. C. Abbott, the General Deputy of the National Grange. The present condition of the order in the State is regarded as eminently satisfactory by the leading men. In proportion to its size, and the number of its farming population, they say that Massachusetts is leading the Western States. The Boston Grange remains in statu quo. It has not surrendered its charter, and absolutely refuses to do so until the National Grange decides that persons interested in farming other than actual produce have no business in the organization. The general opinion expressed among the grangers here is that the action of the General Deputy in organizing this Boston Grange will be sustained, and the officers of the various branches in this convention favor the extension of the movement to Boston. It is alleged that quite a number of the leading officers of the head grange sustain the Boston Grange in its action.

Reproduced with permission of the copyright owner. Further reproduction prohibited without permission.

## More Opinions cont'd

could let every country doctor consult the best specialists and clinics. It could bring technical support service industries that are moving to India and other foreign nations back to our rural communities. Above all, it would level the playing field between the American farm and the large corporation.

About one-third of all farmers already use computers and the Internet for their business. The vast majority of higher-income farms rely on computers and the Internet. In a global economy, these connections are vital, allowing farmers to track commodity prices and keep in touch with distant customers. Yet farmers are in dire need of better connections. A survey from the National Agricultural Statistics Service shows that almost 70 percent of "wired" farmers are still forced to use slower, dial-up service to access the Internet for lack of adequate telecommunications infrastructure development in rural communities.

The Video Choice Act would relieve competitors of the need to complete onerous negotiations before entering each new market. This would speed the deployment of new services and put immediate pressure on cable rates.

As commonsensical as this legislation is, however, it is no sure thing. Cable companies are spending fortunes on a campaign to confuse Congress in order to maintain their local cable service monopolies.

Congress would do well to listen to rural Americans who have the most to lose or gain in this debate. Rural Americans need a choice as well as a chance to take advantage of all of the benefits of the information-based economy of the 21st Century.

# Ag Talk

## Suggestions for Agriculture Websites and Newsletters

By **Leroy Watson**, National Grange Legislative Director

One of the questions that we often get from agriculture directors and agriculture committee chairmen are “Where can I find interesting and valuable information regarding developments in agriculture?” Finding this kind of information can be tedious and time consuming for Grange agriculture leaders who would like to learn more about how agriculture affects their communities.

This month in Ag Talk, I’m going to provide a list of interesting and informative websites and newsletters that cover a wide variety of agriculture issues. I chose to focus on websites and newsletters, rather than magazines and newspapers, because by their design and presentation they offer lots of information in a concise manner. I also chose to focus on interesting and valuable information and materials that an agriculture director/chairman could use immediately. Finally, I decided to limit my recommendations in this article to resources that are free of charge.

This list is not scientific nor is it complete. There are a number of interesting newsletters and websites covering agriculture issues that could be added to this list. If you have a favorite free publication or website that covers agriculture issues that you would like to share with Grange agriculture directors/chairmen across the nation, please feel free to post that information on our National Grange Legislative Policy Discussion Board at [www.nationalgrange.org/legislation](http://www.nationalgrange.org/legislation).

### **United States Department of Agriculture – [www.usda.gov](http://www.usda.gov)**

The agencies of the U.S. Department of Agriculture have a number of websites that are dedicated to providing information for farmers about a wide variety of issues that affect farmers and the impact the laws and regulations that USDA is charged with administering.

### **State Departments of Agriculture – [www.nasda.org](http://www.nasda.org)**

The department of agriculture for each state also has a website with free informational resources specifically directed to the agriculture produces of that state. Each of the state departments of agriculture is affiliated with a national umbrella organization – the National Association of State Departments of Agriculture.

### **The New Farm – [www.newfarm.org](http://www.newfarm.org)**

Easy to read, colorful, and valuable farmer-to-farmer know how focusing on small scale, organic, sustainable, and regenerative farming practices published by the Rodale Institute. The Rodale Institute seeks to advance “regenerative” agriculture not just in the U.S. but worldwide. The tone can be a little preachy at times depending on the authors of the various articles, and they are not very tolerant of successful agriculture production systems that they do not consider to be “regenerative.”

### **Current Thoughts/Random Thoughts – [www.westchester-group.com](http://www.westchester-group.com)**

Information of interest related to investment opportunities in agriculture for commercial-sized farming operations and agri-business investors, especially in the Midwest. The Westchester Group, Inc publishes the newsletter. The Westchester Group is an agricultural asset management firm that provides a complete range of agricultural real estate and management services, including acquisition, management, and disposition of agricultural investments for institutional clients, corporate clients, and individual clients. For a unique perspective on how bright and hard working people make an honest living and to view the world from this niche of U.S. agriculture, visit this website.

### **Center for Rural Affairs – [www.cfra.org](http://www.cfra.org)**

The Center for Rural Affairs in Lyons, NE publishes an informative and thought-provoking newsletter primarily directed toward policies and programs that affect farm profitability for mid-sized and small family farms

in the Midwest. Center Director Chuck Hassebrook is not afraid to make controversial statements about what he believes is right and what is wrong with agriculture policy or even to change his mind if someone can convince him with additional facts or different perspectives that he has not fully considered.

### **Leopold Letter – [www.ag.iastate.edu/centers/leopold/](http://www.ag.iastate.edu/centers/leopold/)**

The Leopold Center for Sustainable Agriculture, at Iowa State University in Ames, IA, as its name indicates, focuses on disseminating research, production, and marketing information aimed at sustainable agriculture practices. The Leopold Center is also a research grant-making organization and many of their articles focus on the results of the research they have funded. An interesting, recent article includes “Creating a Virtual Farm On-line.”

### **Main Street Economist: Commentary on the Rural Economy –**

#### **[www.kansascityfed.org/ruralcenter](http://www.kansascityfed.org/ruralcenter)**

Published by the Center for the Study of Rural America at the Federal Reserve Bank of Kansas City. The Federal Reserve System does much more than simply raise or lower the nation’s short-term interest rates. Most of the individual Federal Reserve Banks also invest in economic research on important aspects of the national economy. Main Street Economist is a readable and balanced presentation of economic trends and issues affecting not only rural areas in the Midwest but across the nation. You will not always like what they say but if you care about the future of agriculture and rural communities, you can ignore their analysis at your own peril.

---

### *Part D cont’d*

understand and informative. Mr. Watson cited the Grange’s extensive volunteer program, its nationwide network of chapters in rural communities, as well as the creation of interactive teaching methods that engage seniors, such as games and comic strips, as innovative examples of strategies for overcoming these difficulties.

The National Grange’s active role in the Medicare prescription drug coverage follows in our organizations progressive footsteps of the past and present. Our hope is to inform rural citizens who are most affected by these new coverage opportunities and continue to bring necessary information to our members.

CitiMortgage Member Benefit Program



## Buying a home can be easy— when you have options.

Getting a mortgage can be stressful, but not with your Member Benefit Mortgage Program. Through our alliance, CitiMortgage will help National Grange members get the home financing assistance they need on their first home, second home, investment property, or new construction. As a Grange member, you receive the following benefits:

- ▶ Lender fees will be capped at \$350 on a new or refinanced mortgage.
- ▶ A choice of either \$500 off closing costs, or 1/4% point reduction in interest rate.
- ▶ Preferred interest rates.
- ▶ Approval in minutes—Qualify with our CitiQuik® program.
- ▶ Pre-approved with SureStart®—Shop with confidence when you get pre-approved through our SureStart program.
- ▶ Our Combo HELOC product expands your home financing options.
- ▶ Construction Lending Program—Build a new home or renovate your existing home with just one loan.

**Home Solutions**—CitiMortgage has teamed with Cendant Mobility to help you get up to \$1,500 cash back after closing when you buy and/or sell your home using this program!

**For more information, please contact our CitiMortgage Mortgage Consultant at 1-800-353-7989.**



**citi mortgage**

<sup>1</sup>Cash back from Cendant Mobility not available in some states. All real estate commissions are negotiable. To be eligible, you must register with the Home Solutions Program before contacting a real estate agent. \$1,500 is based on an average home price of \$375,000.



©2005 CitiMortgage, Inc. CitiMortgage, Inc. does business as Citicorp Mortgage in NM. CitiMortgage, Inc. is an equal housing lender. Fixed Rate Home Equity Loans and Home Equity Lines of Credit are made available through Citibank, NA, Citibank FSB and Citibank (West), FSB, equal housing lenders. CitiMortgage is a registered service mark of Citicorp.

\*Calls are randomly monitored and recorded to ensure service quality.

Member of citigroup

# Kid's Page - An Autumn Craft



Stick Vase

Materials:

- Sticks (1/4 inch in diameter)
- Garden Clippers
- Empty Plastic Jar
- Thick Rubber Bands
- Raffia or Ribbon
- Glue
- Pinecones (Optional)

1. Break or snip sticks to about an inch longer than the jar.
2. Put two rubber bands around the jar, one inch from the top and bottom. Now begin tucking the sticks under both rubber bands, placing them as close as possible to each other.
3. Once the jar is surrounded with sticks, slide the rubber bands together at the jar's middle and cover them with a decorative bow.
4. Glue on a few pinecones and then fill the vase with flowers. For those uninterested in flower arrangements, this vessel also makes a quality pencil holder.

\* Courtesy of Family Fun, [www.familyfun.com](http://www.familyfun.com)

## Did You Know?

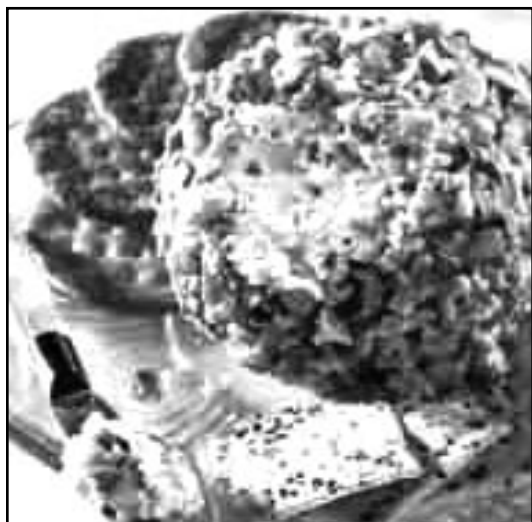
The original name of the New Grange was the *National Grange Monthly*.

# At Home with Bill



**William Steel**  
National Grange Master

Everyone who knows me knows that I love to cook, but I love cooking especially during the holidays. The holidays are a time when you don't have to worry about counting calories or carbohydrates. You just enjoy the festivities, family gathering, and food. This is one of my favorite recipes for this time of the year, especially when I'm entertaining. Enjoy!

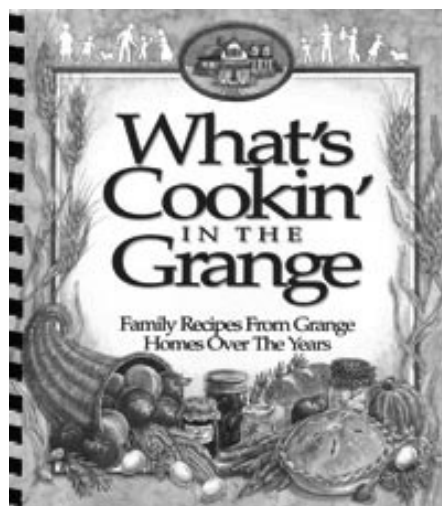


## Bill's Cheese Balls

- 1-8 ounce package of cream cheese, softened
- 1/4 pound (about 1 cup) of cheddar cheese, grated
- 2 ounces of blue cheese, crumbled
- 1 small onion, minced
- 1/8 teaspoon (about 4-5 dashes) hot pepper sauce
- 1/4 teaspoon garlic powder

- 1/8 teaspoon each salt and pepper
- 1/2 cup chopped pecans

Blend all but the pecans together well. Shape into a ball or log and roll in pecans, which should be placed on a sheets of wax paper. Wrap in the wax paper and refrigerate for about one and half hours before serving. Best if made a day before expected use. Makes 20-35 servings.



## Holiday Favorites from What's Cookin' in the Grange

### America's Cut Pork Chops and Dressing

- 8 (3-ounce) America's cut pork chops
- 1/4 cup water
- 2 (10-ounce) cans cream of mushroom soup
- 3 cups croutons
- 1 1/4 cups chopped celery
- 1 medium onion, finely chopped
- 1/4 teaspoon sage
- salt and pepper to taste

Brown the pork chops on both sides in a skillet. Transfer the pork chops with a slotted spoon to a baking pan. Add the water to the pan drippings, stirring to loosen any brown particles. Stir in the soup, croutons, celery, onion, sage, salt, and pepper. Mound some of the crouton mixture on each pork chop. Bake at 350 degrees for 1 hour or until the pork chops are cooked through.

### Sweet Potato Casserole

- 3 cups mashed, peeled, and cooked sweet potatoes
- 1 cup sugar
- 1/4 cup (1/2 stick) margarine, melted
- 2 eggs, lightly beaten
- 1 teaspoon vanilla extract
- 1 cup packed brown sugar
- 1/3 cup flour
- 1/3 cup margarine
- 1 cup chopped pecans

Combine the sweet potatoes, sugar, 1/4 cup margarine, eggs, and vanilla in a bowl and mix well. Spoon into a 7x7-inch baking dish. Combine the brown sugar, flour, margarine, and pecans in a bowl and stir until crumbly. Sprinkle over the prepared layer. Bake at 350 degrees for 30 minutes or until golden brown and bubbly.

### Green Bean Casserole

- 1 cup chopped red bell pepper
- 1 cup finely chopped onion
- 1 tablespoon margarine
- 1 (10-ounce) can of any flavor cream soup
- 1/4 cup milk
- 1 teaspoon teriyaki sauce
- 1/8 teaspoon pepper
- 2 (16-ounce) packages frozen green beans, thawed and drained
- 1 (8-ounce) can sliced water chestnuts, drained
- 1 cup shredded Cheddar Cheese

Sauté the red pepper and onion in the margarine in a skillet until tender. Stir in the soup, milk, teriyaki sauce, and pepper. Add the green beans and water chestnuts and mix well. Cook until bubbly, stirring frequently. Spoon into a 2-quart baking dish. Sprinkle with the cheese. Bake at 350 degrees for 15 minutes or until heated through.

*To order What's Cookin' in the Grange, please call 1-888-447-2643, ext. 103.*

## Did You Know?

The National Grange hymn is "To Thee, Beloved Grange."

PERMITTED  
ALBANY, NY  
PAID  
U.S. POSTAGE  
STANDARD  
PRESORTED



## Announcements & Tidbits

Grange membership card books (Item# 410) are now available from National Grange for \$2.00. Booklets contain 25 membership cards and dues receipt records. To order, please call 1-888-447-2643, ext 103.

The Grange and You (Item# 509), a booklet giving an overview of the Granges and its seven degrees is now available. The book has been redesigned, rewritten, and the cost is 50 cents each. To order, please call 1-888-447-2643, ext. 103.



The National Grange would love to publish articles and pictures about your Grange. Please send them to: National Grange, Attn: New Grange, 1616 H Street, NW, Washington, D.C. 20006 or [sespie@nationalgrange.org](mailto:sespie@nationalgrange.org).

the **New** grange